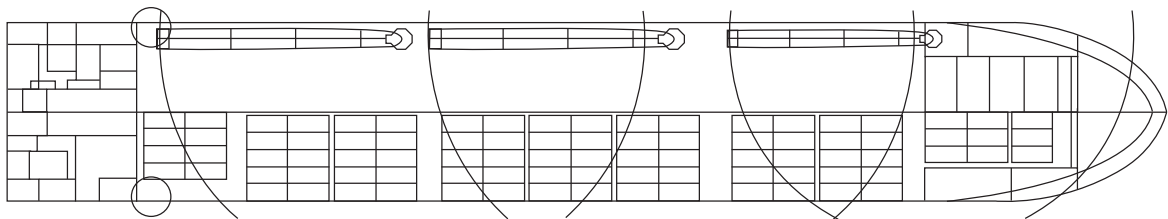
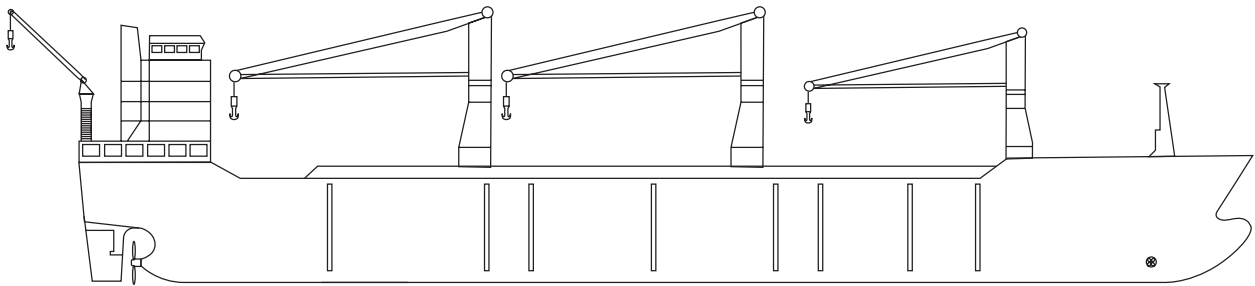
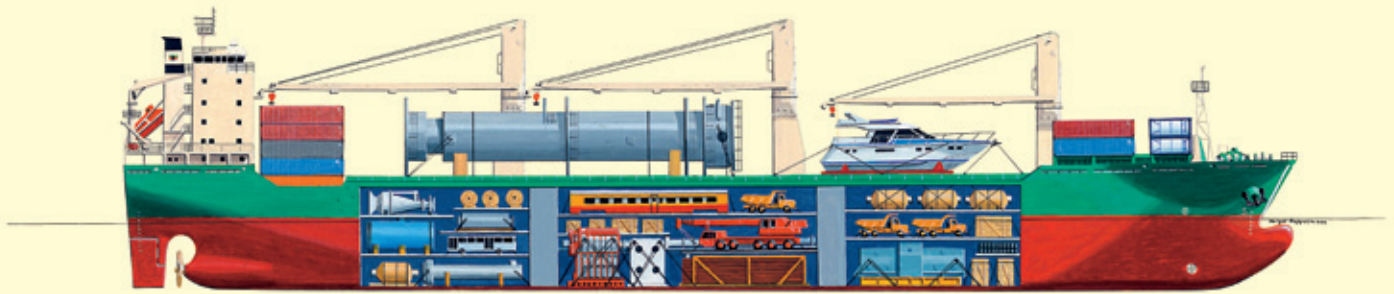




## Superflex Mumbai Max Class



RICKMERS-LINIE



## Technical Details

(all details about)

<b>Tonnage</b>	<b>GT</b>	<b>NT</b>	<b>Length o.a.</b>	174,60 m
<b>Convention 69</b>	19.000	9.000	<b>Length p.p.</b>	165,20 m
<b>Deadweight</b>	tdw	24.300	<b>Breadth</b>	26,46 m
			<b>Draught scantl.</b>	10,30 m

## Machinery

<b>Machinery</b>	1 x Diesel
<b>Power</b>	11.200 kW
<b>Max. Speed</b>	18 kn

## Capacities

<b>Gear</b>	1 crane fore	100 t	<b>Cargo Cap. (grain)</b>	ca. cbm 30.200
	2 cranes each	350 t	<b>Container Cap.</b>	max. TEU 1.440
		combined 700 t		

## Holds and Hatches

<b>Hold 1</b>	19,20 x 16,50 m	<b>Hold 2 portside</b>	25,60 x 10,32 m	<b>Hold 3 portside</b>	38,40 x 10,32 m	<b>Hold 4 portside</b>	25,60 x 10,32 m
		<b>Hold 2 starboard</b>	25,60 x 10,32 m	<b>Hold 3 starboard</b>	38,40 x 10,32 m	<b>Hold 4 starboard</b>	25,60 x 10,32 m

- > Lifting capacity of up to 700 tons
- > Adjustable tweendecks - box shaped
- > Unobstructed deckspace 115 x 22 m



RICKMERS-LINIE

[www.rickmers-linie.com](http://www.rickmers-linie.com)